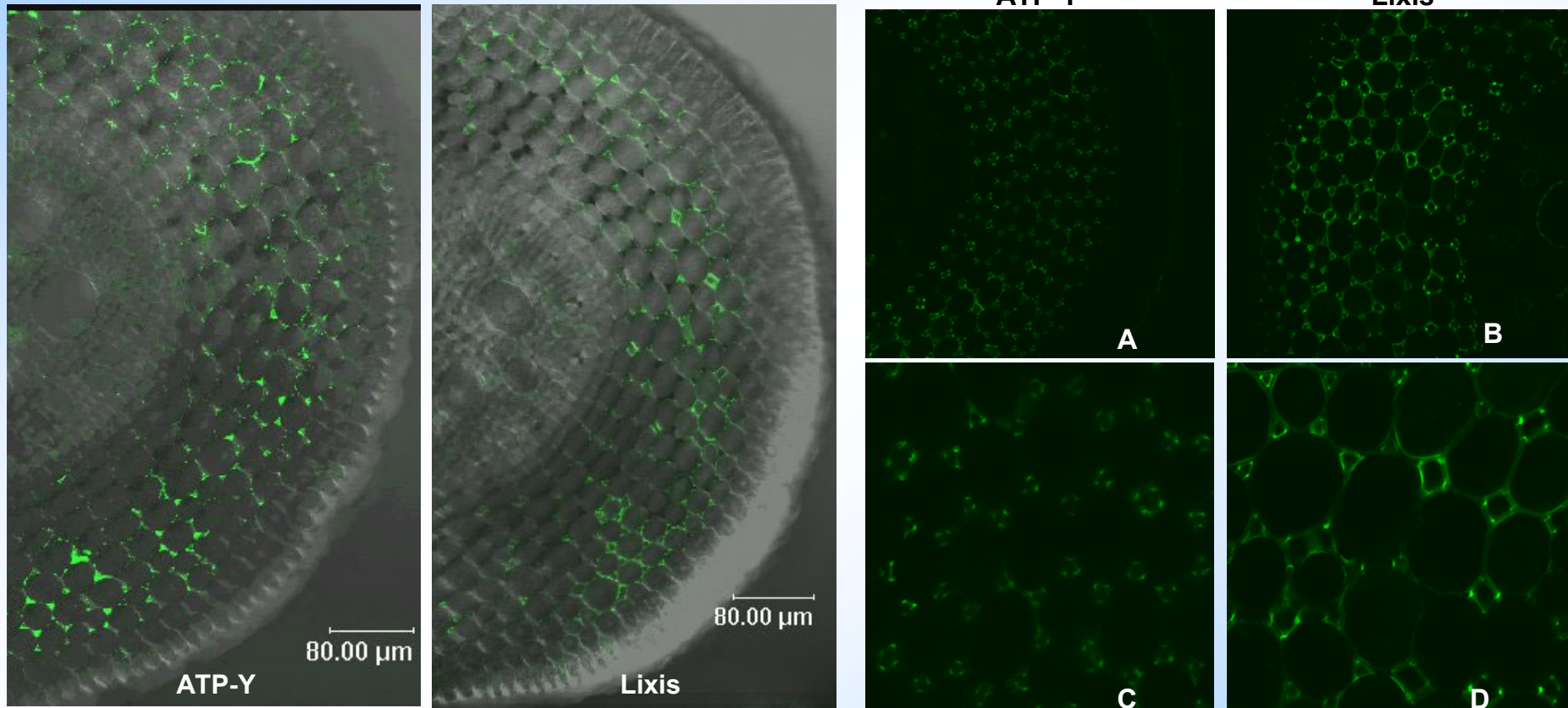


# Immunolocalization of pectins reveals a higher content of high methylized and a lower content of low methylized pectin in the Al-resistant maize cultivar ATP-Y

ETICHA, D., STAB, A., HORST, W.J. ( Plant Cell Env., in press).



High-methyl-ester pectin (JIM 7 epitope) in the 1-2 mm apical root cross section

Low-methyl-ester pectin (JIM 5 epitope) in the 1-2 mm apical root cross section. C and D – magnified view of A and B.

